

**ONCE  
UPON A  
TIME**



[info@silobrussels.be](mailto:info@silobrussels.be) - [www.silobrussels.be](http://www.silobrussels.be) - Meudon street 54 - 1120 Brussels

**FABRICE**

+32 478 51 10 73

**RAFAL**

+32 477 60 40 06

**SERGE**

+32 475 25 45 02

# PRESENTATION

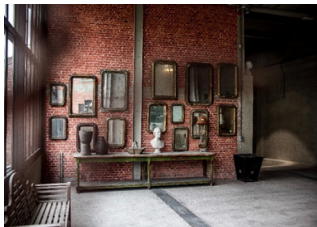
## STORY



In Neder-Over-Heembeek, on the left bank of the outer-harbour of Brussels was a brewery. **Over two hundred people worked there** producing water, lemonade, beer and malt.



**Two young entrepreneurs** working in the packing and transportation of artwork **purchased the former brewery to set up their office and workshop.**



Lacking water in sufficient quantity supplied by the Marly source, **activities were stopped some thirty years ago.** And this is where the story of Silo begins.



**It took seven years to turn this derelict building into a venue** worthy of displaying some of the finest works of art.

## THE RESULT?

**A vast, magnificent venue that combines concrete, brick and steel** and leaves no one indifferent to its beauty and soul. From this realisation, the idea was born to change the plan and use this former factory as an event venue showcasing its formidable character.

**Silo Brussels was created, success was swift to follow, with a continuous stream of high quality events.** But this was only just the beginning... The rest is up to you.



On the canal side, **Silo Brussels, a former brewery and malt house** is sure to astound you with its industrial look and the simplicity of its spaces. Going in via the Silos and the entrance chamber with **its mix of old brick, steel and concrete** is an experience in itself.

The rooms, **Meudon, Navy's, Ketjes, Rubens, Black Bull and Bark Ale** named after beers once brewed there, will amaze you.

**The Workshop, the Mezzanine and the Kiosk** will blow you away with their original features.

**The 750 m<sup>2</sup> Rooftop** completed in 2020 adds the finishing touch. **Facing due south it offers an unparalleled view over the canal and Brussels.**



# YOUR SPACES

## SAS

*Size: 168 m<sup>2</sup> | Cocktail: 120 | Seated: 80*

This is where it all begins. Twenty metres of silo overhead and a few steps further, you enter a unique universe. **The DNA of the venue, mixing its industrial soul and the appreciation for art and clean lines, is felt straight away.**

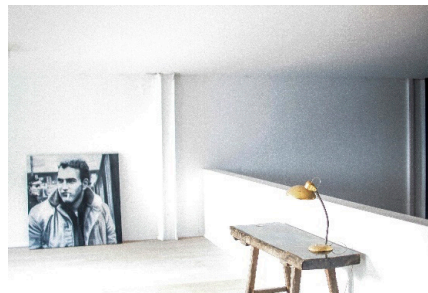
This is where the visitor will be greeted before embarking on their visit.



## ATELIER

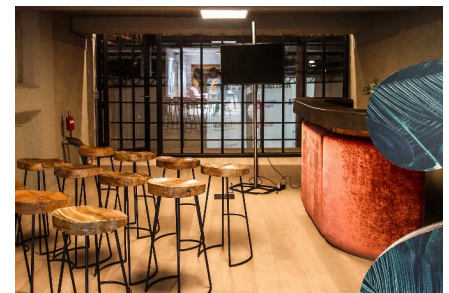
*Size: 158 m<sup>2</sup>*

The Atelier and its Mezzanine are the areas which are most similar to a loft. **This is an ideal area to welcome guests or small groups of visitors.** The workshop is also often used by organisers for setting up their own areas.



## MEZZANINE

*Size: 40 m<sup>2</sup>*



## RUBENS & CO

*Size: 41 m<sup>2</sup> | Theatre: 40 | Classroom: 20 | U shape : 15*

Rubens, Black Bull, Ketjes and Bark Ale are beers formerly brewed in the Silo.

**The four small identical rooms that bear their names are often used for workshops, ...**



## MEUDON

*Size: 1321 m<sup>2</sup> | Theatre: 800 | Cocktail: 1000 | Classroom: 800*

Meudon is the name of the road that leads to the Silo but the story doesn't end there. It's also the name of the château which was built on the site of the brewery and the 7ha grounds that adjoin the Silo. **Today, Meudon is the name of the main hall in the Silo.**

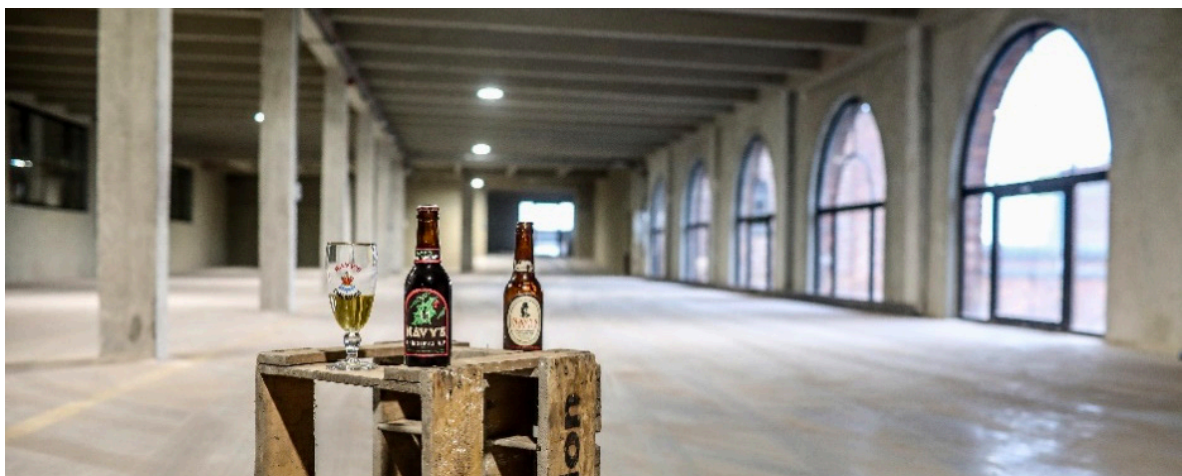
With its high ceilings, clean lines and industrial style, this space is sure to impress. **Each visitor or organiser uses it in a different way and can express all their creativity to use the space to host receptions, dinners, conferences, exhibitions, ...**

## NAVY'S

*Size: 660 m<sup>2</sup> | Theatre: 420 | Cocktail: 530 | Classroom: 400 | Seated: 420*

Another beer formerly brewed at the Silo, Navy's is the second largest room in the Silo. **Smaller and not as high as Meudon**, with its columns and substantial frame overlooking the canal, it retains a truly industrial feel.

**Dinners, receptions, workshops or exhibitions hold their own here alongside the Meudon.**



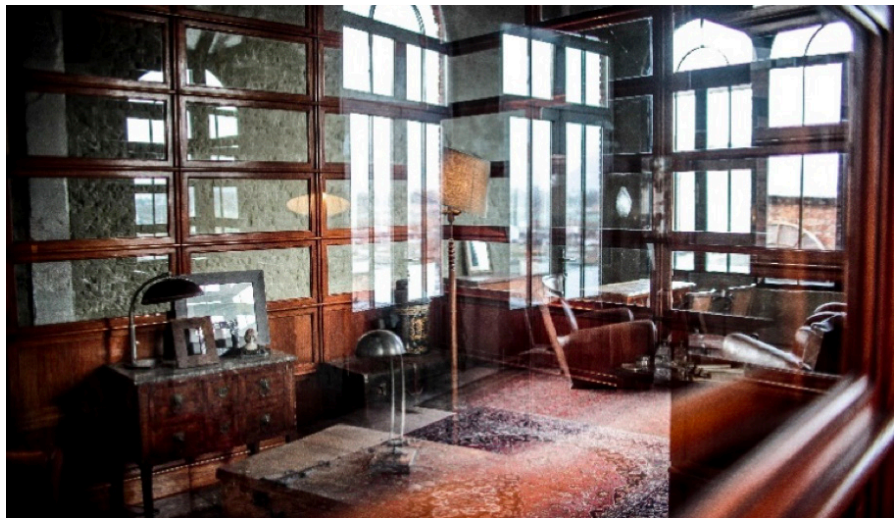


## ROOFTOP

*Size: 750 m<sup>2</sup>*

With its south facing aspect in an industrial area accessible by boat, public transport, bike along the canal or by car.

**The rooftop of the Silo is a unique space of 750 m<sup>2</sup> that offers an unparalleled view over Brussels.**



## KIOSQUE

*Size : 130 m<sup>2</sup>*

**In just a few seconds, the Kiosk whisks you back in time. At the centre of this cube is an old inlaid kiosk reminiscent of another era and in stark contrast with the gritty, industrial feel of the room.**

## Summary of spaces

Zone	M <sup>2</sup> Total	M <sup>2</sup>	Reception	Diner	Theatre	U-shape
<b>Meudon</b>	1711	1321	1000	800	800	-
Sas + cloakroom		250	200	80	-	-
Kiosque		130	40	-	-	-
Smoking area		10	-	-	-	-
<b>Half Meudon</b>	1050	550	530	420	420	-
Sas + cloakroom		250	120	80	-	-
Kiosque		130	40	-	-	-
Smoking area		10	-	-	-	-
<b>Navy's</b>		660	800	600	500	-
<b>Atelier &amp; Mezzanine</b>	362	198	60	60	40	20
<b>Rooftop</b>		750	650	-	-	-
<b>Kejtes</b>		41	-	-	30	15
<b>Rubens</b>		41	-	-	30	15
<b>Black Bull</b>		41	-	-	30	15
<b>Bark Ale</b>		41	-	-	30	15

